

PRODUCT CATALOG

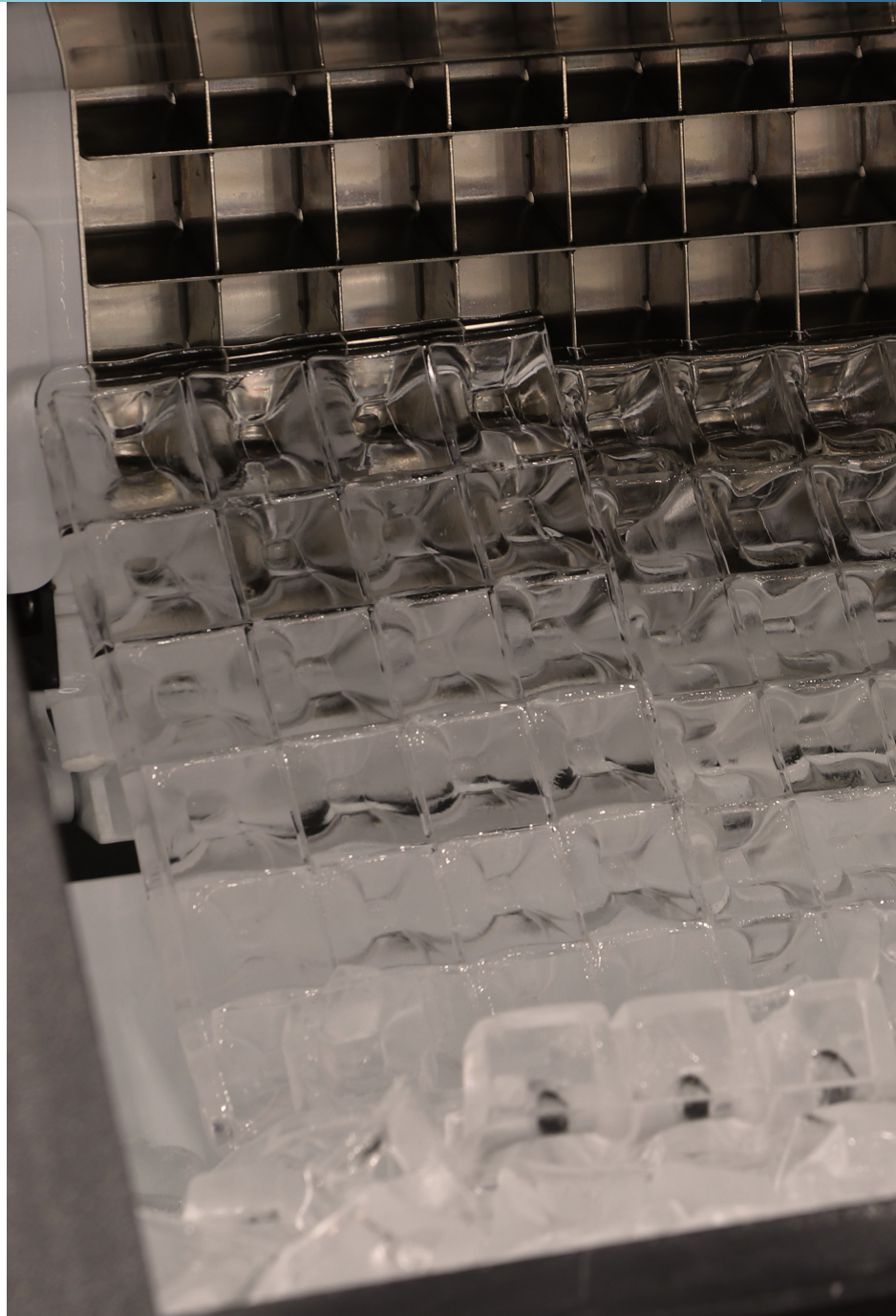
HVAC and Ice Machines

Address :

2012 Corporate Lane
Suite 124
Naperville, IL 60563

Contact :

P : (331) 702-2051
F : (630) 857-9260
E : info@choicemfg.parts
W : choicemfg.parts



Introducing the Industry's most Universal Dump/Purge Valves!

UNIVERSAL

ICE MACHINE



HV074

DUMP/PURGE VALVE

120V, 50/60Hz, Universal Dump Valve kit.

WATER VALVE

MADE IN CHINA



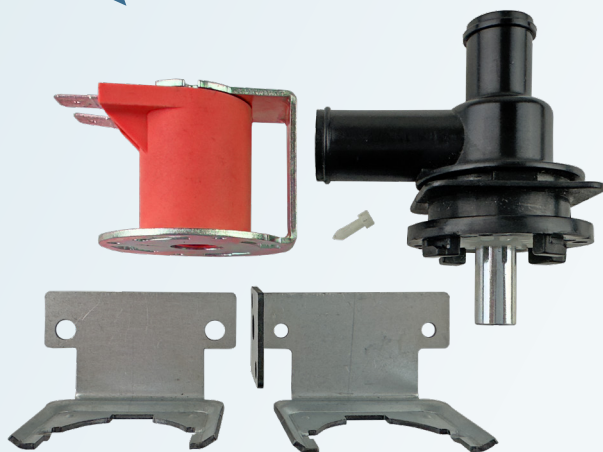
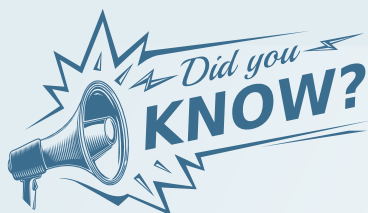
HV074A

DUMP/PURGE VALVE

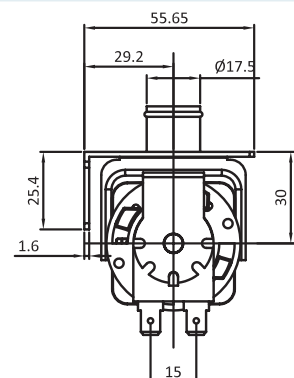
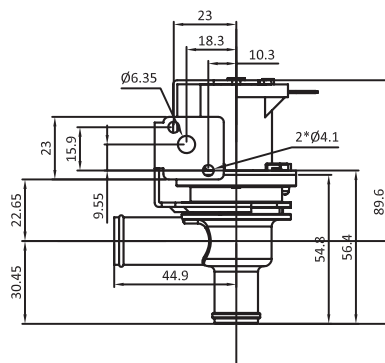
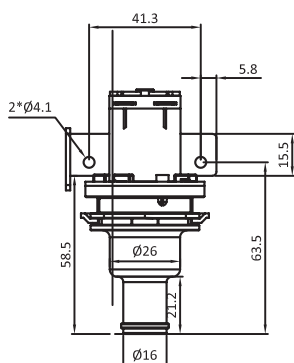
240V, 50/60Hz, Universal Dump Valve kit.

WATER VALVE

MADE IN CHINA



- ☞ Includes two brackets that rotate 360° for multiple mounting configurations.
- ☞ Includes locking pin, allowing the coil to rotate 360° for multiple mounting configurations.
- ✓ Coil available in 120V or 240V, intermittent duty (4 min. on / 5 min. off).
- ✓ Terminals are 6.3*0.8 Tin plated brass per UL310 specifications.
- ☞ Valve will produce less than 70dB, one second after applying power.
- ☞ Operates between 25" and 72" water column.
- ☞ Can be easily disassembled for cleaning.



HOSHIZAKI

ICE MACHINE

**IH4A7077G01****FLOAT SWITCH**

120V float switch. Fits Hoshisaki stackable Crescent Cuber.

SWITCH

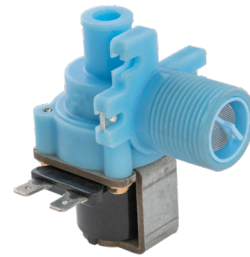
MADE IN CHINA

**IH4A7077G02****FLOAT SWITCH**

240V float switch. Fits Hoshisaki stackable Crescent Cuber.

SWITCH

MADE IN CHINA

**IH3U0111-01****WATER VALVE**

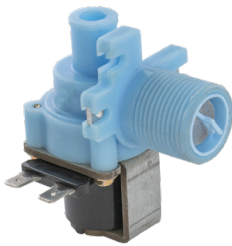
120V, 60Hz, 3.96 GPM. Fits Hoshisaki Crescent Cuber ice makers.

WATER VALVE

MADE IN CHINA

HOSHIZAKI

ICE MACHINE

**IH3U0111-02****WATER VALVE**

120V, 60Hz, 2.11 GPM. Fits Hoshisaki Crescent Cuber ice makers.

WATER VALVE

MADE IN CHINA

**IH3U0111-03****WATER VALVE**

120V, 60Hz, 1.58 GPM. Fits Hoshisaki Crescent Cuber ice makers.

WATER VALVE

MADE IN CHINA

**IH3U0111-04****WATER VALVE**

120V, 60Hz, .79 GPM. Fits Hoshisaki Crescent Cuber ice makers.

WATER VALVE

MADE IN CHINA

**IH3U0150-01****SOLENOID VALVE**

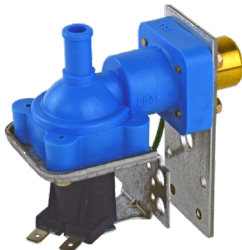
120V, 60Hz, 0.52 GPM single coil. Fits Hoshisaki KM-201/280/301 and KML200/351/451 machines.

WATER VALVE

MADE IN CHINA

MANITOWOC

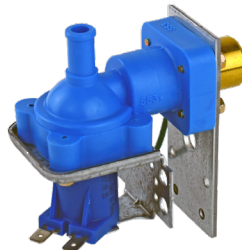
ICE MACHINE

**56675****WATER VALVE**

120V, 0.75 GPM. Fits Manitowoc 2405283 and 7601123.

WATER VALVE

MADE IN CHINA

**56675A****WATER VALVE**

240V, 0.75 GPM. Fits "Q" series Manitowoc 2405293 and 7601133 from 1995-2005.

WATER VALVE

MADE IN CHINA

**IH40003579****WATER VALVE**

120V, 60Hz, 5W Replaces 040003579

WATER VALVE

MADE IN ITALY

**IH6063****WATER VALVE**

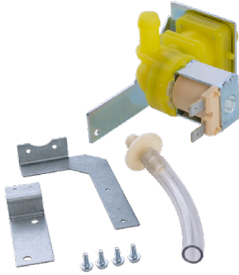
120V, 60Hz Replaces 000006063

WATER VALVE

MADE IN ITALY

MANITOWOC

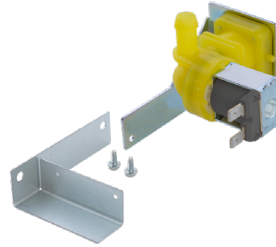
ICE MACHINE

**IH9120****WATER VALVE**

120V, 60Hz, 5W, .53 GPM. Includes brackets and tube. Replaces Manitowoc 000009120.

WATER VALVE ©

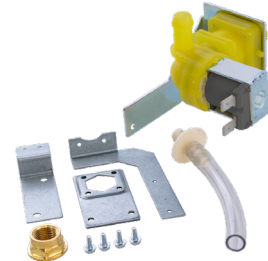
MADE IN CHINA

**IH9121****WATER VALVE**

220/240V, 50/60Hz, 6W, 1.8 GPM. Includes brackets. Replaces Manitowoc 000009121.

WATER VALVE ©

MADE IN CHINA

**IH9122****WATER VALVE**

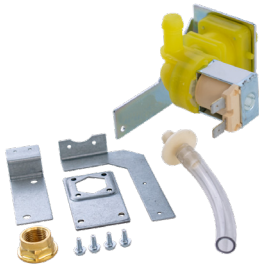
220/240V, 50/60Hz, 6W, .78 GPM. Includes brackets, tube and fitting. Replaces Manitowoc 000009122.

WATER VALVE ©

MADE IN CHINA

MANITOWOC

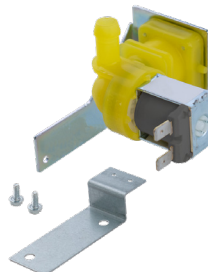
ICE MACHINE

**IH9123****WATER VALVE**

120V, 60Hz, 5W, flow .78 GPM. Includes brackets, tube and fitting. Replaces Manitowoc 000009123.

WATER VALVE ©

MADE IN CHINA

**IH9124****WATER VALVE**

220/240V, 50/60Hz, 6W, 2.64 GPM. Includes brackets. Replaces Manitowoc 000009124.

WATER VALVE ©

MADE IN CHINA

**IH6058****WATER VALVE**

220V, 60Hz, single coil valve with mounting bracket. Fits Manitowoc ice machines.

WATER VALVE ©

MADE IN CHINA

ICE-O-MATIC

ICE MACHINE

**IH1011337-28****INLET VALVE**

120V Replaces Ice-O-Matic 1011337-28.

WATER VALVE ©

MADE IN CHINA

**IH9041105-01****INLET VALVE**

120V 60Hz. Replaces Ice-O-Matic IH9041105-01.

WATER VALVE ©

MADE IN CHINA

**IH9041105-02****INLET VALVE**

240V 60Hz. Replaces Ice-O-Matic IH9041105-02.

WATER VALVE ©

MADE IN CHINA

ICE-O-MATIC

ICE MACHINE



IH9041105-03

PURGE VALVE
240V 60Hz. Replaces Ice-O-Matic IH9041105-03.

WATER VALVE

MADE IN CHINA



IH9041105-04

PURGE VALVE
240V 60Hz Replaces Ice-O-Matic IH9041105-04.

WATER VALVE

MADE IN CHINA



IH9041105-05

PURGE VALVE
120V 60Hz Replaces Ice-O-Matic IH9041105-05

WATER VALVE

MADE IN CHINA

SCOTSMAN

ICE MACHINE



IH2004 (110V)
WATER VALVE

60Hz rotatable coil.

- 12-1434-01 IH2004
- 12-1434-02 IH2004
- 12-1434-04 IH2004
- 12-1434-08 IH2004
- 12-1434-09 IH2004

Includes .25 and .50 GPM flow washer kit with instructions.

MADE IN UNITED STATES



IH2005 (110V)
IH2005A (240V)
WATER VALVE

60Hz rotatable coil.

- 12-1646-01 IH2005
- 12-1646-02 IH2005
- 12-1646-03 IH2005A
- 12-1646-04 IH2005A
- 12-1646-05 IH2005
- 12-1646-06 IH2005A
- 12-1646-07 IH2005
- 12-1646-08 IH2005A
- 12-1646-10 IH2005A
- 12-1646-11 IH2005A

Includes .15, .50, .75 and 1.0 GPM flow washer kit with instructions.

MADE IN UNITED STATES



IH2006 (110V)
IH2006A (240V)
WATER VALVE

60Hz rotatable coil.

- 12-1900-01 IH2006
- 12-1900-02 IH2006A
- 12-1900-03 IH2006
- 12-1900-04 IH2006A
- 12-1900-05 IH2006
- 12-1900-06 IH2006A
- 12-1900-07 IH2006
- 12-1900-09 IH2006A
- 12-1900-10 IH2006

Includes .25, .33, .50 and .75 GPM flow washer kit with instructions.

MADE IN UNITED STATES



IH2007 (110V)
IH2007A (240V)
WATER VALVE

60Hz rotatable coil.

- 12-2261-01 IH2007
- 12-2261-02 IH2007A
- 12-2261-03 IH2007A
- 12-2261-04 IH2007
- 12-2313-01 IH2007
- 12-2313-02 IH2007A
- 12-2313-03 IH2007A
- 12-2313-04 IH2007

Includes .33 and .75 GPM flow washer kit with instructions.

MADE IN UNITED STATES



IH2010 (110V)
IH2010A (240V)
WATER VALVE

60Hz rotatable coil.

- 12-2446-01 IH2010
- 12-2446-02 IH2010A
- 12-2446-03 IH2010
- 12-2446-04 IH2010A
- 12-2446-05 IH2010
- 12-2446-06 IH2010A
- 12-2446-21 IH2010
- 12-2446-22 IH2010A
- 12-2446-23 IH2010
- 12-2446-24 IH2010A
- 12-2446-25 IH2010

Includes .50, .75 and 1.0 GPM flow washer kit with instructions.

MADE IN UNITED STATES



11051401CM
PURGE VALVE - 240V

240V, 60Hz coil, 0.715 outlet, 0.625 inlet body. Fits Scotsman Ice Machines. Replaces Horton 560/240CDC.

WATER VALVE

MADE IN UNITED STATES



11051402CM
PURGE VALVE - 120V

120V, 60Hz coil, 0.715 outlet, 0.625 inlet body. Fits Scotsman Ice Machines. Replaces Horton 560CDC.

WATER VALVE

MADE IN UNITED STATES

SCOTSMAN

ICE MACHINE



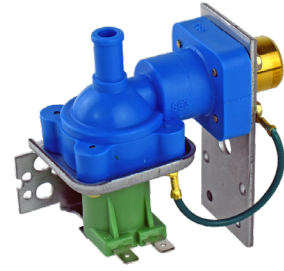
IH2410-21
 WATER VALVE
 120V .22 GPM.
 Fits Scotsman 12-2410-02.

WATER VALVE

MADE IN UNITED STATES 

IH2447-01
 WATER VALVE
 120V, 0.33 GPM.
 Fits Scotsman 12-2447-01

WATER VALVE

MADE IN UNITED STATES 

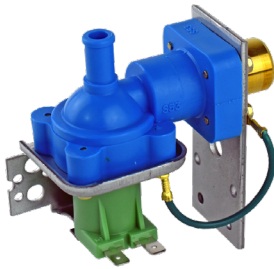
IH2548-01
 WATER VALVE
 24VAC, 1.0 GPM.
 Fits Scotsman 1996-2005.

WATER VALVE

MADE IN UNITED STATES 

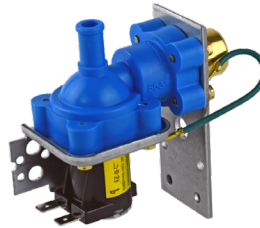
SCOTSMAN

ICE MACHINE



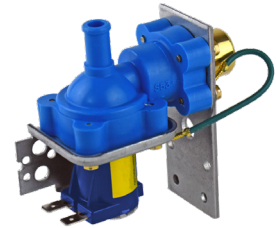
IH2666-01
 WATER VALVE
 24VAC, 2.6 GPM.
 Fits Scotsman 1996-2005.

WATER VALVE

MADE IN UNITED STATES 

IH2922-01
 WATER VALVE
 115V, 1.32 GPM.
 Fits Scotsman 2006-current.

WATER VALVE

MADE IN UNITED STATES 

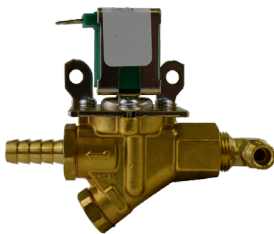
IH2922-02
 WATER VALVE
 240V, 1.32 GPM.
 Fits Scotsman 2006-current.

WATER VALVE

MADE IN UNITED STATES 

SCOTSMAN

ICE MACHINE



IH2990-01
 WATER VALVE
 120 V
 Fits Scotsman 12-2990-01

WATER VALVE

MADE IN MEXICO 

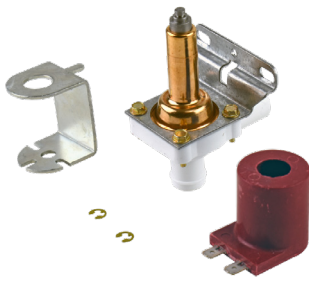
IH4014
 WATER VALVE
 240V, 0.110 GPM
 Fits Crystal Tips 80406305

WATER VALVE

MADE IN UNITED STATES 

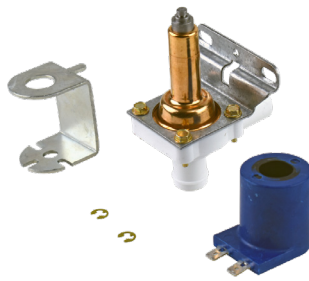
UNIVERSAL

ICE MACHINE



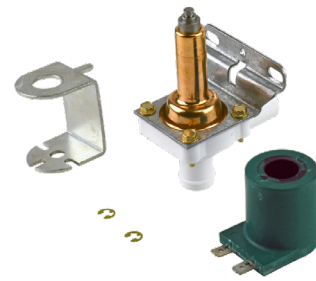
45912CD
DUMP VALVE - 120V
120V, 60Hz coil, packaged to allow 3 coil positions. Fits Manitowoc, SerVend, Scotsman, Ice-O-Matic and Marvel ice machines.

WATER VALVE MADE IN UNITED STATES



45912CDA
DUMP VALVE - 240V
240V, 60Hz coil, packaged to allow 3 coil positions. Fits Manitowoc, SerVend, Scotsman, Ice-O-Matic and Marvel ice machines.

WATER VALVE MADE IN UNITED STATES



45912CDV
DUMP VALVE - 24V
24V, 60Hz coil, packaged to allow 3 coil positions. Fits Manitowoc, SerVend, Scotsman, Ice-O-Matic and Marvel ice machines.

WATER VALVE MADE IN UNITED STATES

UNIVERSAL

DRYER



AT Series
UNIVERSAL THERMOSTAT
120/240V 14/10A 40°
Differential.

AT012	Adjustable range 135° to 175°	Open on rise
AT013	Adjustable range 175° to 215°	Open on rise
AT014	Adjustable range 210° to 250°	Open on rise
AT015	Adjustable range 250° to 290°	Open on rise
AT021	Adjustable range 90° to 130°	Close on rise
AT021	Adjustable range 140° to 180°	Close on rise



LD Series
UNIVERSAL THERMOSTAT
120/240V 10A/5A, SPDT
thermostat.

LD140CM	Open at 120°F	Close at 140°F
LD170CM	Open at 150°F	Close at 170°F
LD200CM	Open at 160°F	Close at 200°F
LD225CM	Open at 185°F	Close at 225°F
LD270CM	Open at 230°F	Close at 270°F

UNIVERSAL

DRYER



Universal HVAC & Dryer Thermostat
120/240V 10A/5A, SPST
THERMOSTAT

L120CM	L155CM	L200CM	L290CM
L125CM	L160CM	L205CM	L300CM
L130CM	L165CM	L225CM	L320CM
L135CM	L170CM	L240CM	L340CM
L140CM	L175CM	L250CM	
L145CM	L180CM	L260CM	
L150CM	L190CM	L270CM	

REFRIGERATOR



ML Series
DEFROST THERMOSTAT
37T Style. Universal.

ML45CM	Open at 45°F	Close at 25°F
ML50CM	Open at 50°F	Close at 30°F
ML55CM	Open at 55°F	Close at 35°F
ML60CM	Open at 45°F	Close at 60°F
ML70CM	Open at 70°F	Close at 50°F

UNIVERSAL

ICE MACHINE



Screen Washers
SCREEN WASHER PACKS

SC300M25	30 Mesh	25 Pack
SC300MK	30 Mesh	100 Pack
SC600MK	60 Mesh	100 Pack

WATER VALVE © MADE IN UNITED STATES



W7438K

VALVE REBUILD KIT - SINGLE
Repair kit for single coil laundry and dishwasher valves. Contains Armature, Diaphragm, guide and spring.

WATER VALVE © MADE IN UNITED STATES



W7438K2

VALVE REBUILD KIT - DOUBLE
Repair kit for dual coil mixing valve. Contains 2 each of Armature, Diaphragm, guide and spring.

WATER VALVE © MADE IN UNITED STATES

UNIVERSAL

ICE MACHINE



Copper Ice Maker Kit
Includes 1/4" copper tubing, self tapping saddle valve and compression fitting. Low lead valve and fittings.

CIM15	15 ft	Copper
CIM25	25 ft	Copper

WATER VALVE © MADE IN CHINA



PVC Ice Maker Kit
Includes plastic tubing, self tapping saddle valve, with male and female compression fitting. Low lead valve and fittings.

PIM25	25 ft	PVC
PIM25E	25 ft	Economy

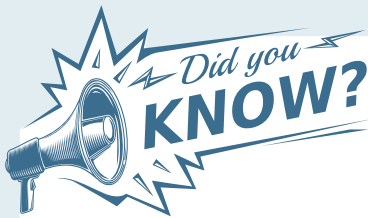
WATER VALVE © MADE IN CHINA



CSV2LL
TAP VALVE

Self tapping saddle valve with 1/4" compression outlets. Fits 3/8" - 1 3/8" copper tubing. Low lead.

WATER VALVE © MADE IN CHINA



In house assembly for low-volume, low production run water valves

Work with our team to build your niche market/low volume water valves here in the United States.



UNIVERSAL

CARRIER

HVAC

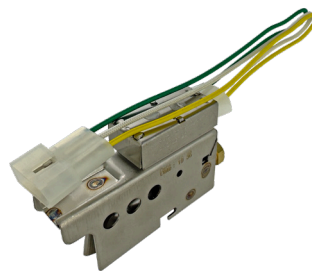


03336A-000CM

SAIL SWITCH W/METAL PLUNGER
125V, 5Amp/250V, 3Amp. Includes switch, metal sail, and 24" leads.

MOTOR

MADE IN CHINA

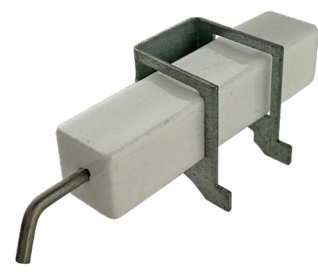


LH680005CM

PILOT BURNER ASSEMBLY
Pilot expansion with 3 lead SPDT switch. Fits Carrier, Bryant, Day & Night and Payne furnaces.

BURNER

MADE IN CHINA



LH680512CM

ELECTRODE
Electrode for LH68005 pilot burner. Fits Carrier, Bryant, Day & Night and Payne furnaces.

SENSOR

MADE IN CHINA

HONEYWELL

LENNOX

HVAC

HVAC



S8610U3009CM

IGNITION MODULE
24VAC, 50/60Hz, 0.2A current draw. Replaces Honeywell, Johnson, and Robert Shaw versions.

ELECTRICAL

MADE IN UNITED STATES



S8910U3000CM

HSI IGNITION MODULE
Universal hot surface ignition module for 120VAC igniter. Replaces multiple Honeywell, White-Rodgers, Robertshaw and Johnson ignition modules.

ELECTRICAL

MADE IN UNITED STATES



60J00CM

IGNITION MODULE
24VAC, 50/60Hz, MV4A, Blower 6FLA @ 120VAC, 0.2A. Fits Lennox gas furnaces.

ELECTRICAL

MADE IN UNITED STATES

CARRIER

UNIVERSAL

HVAC

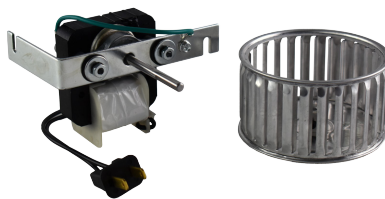


318984-753CM

DRAFT INDUCE MOTOR
115V, 60 Hz, 1.8A, 1/22 HP, 3300 RPM, CW. Includes fan blade and harness adapters.

MOTOR

MADE IN CHINA



K5895CM

BLOWER FAN ASSEMBLY
Single speed motor with mounting bracket, 6" wire leads with 110V plug. Includes 3.75" x 2.0" blower wheel. Fits Nutone bath fans.

MOTOR

MADE IN CHINA



M6700BCM

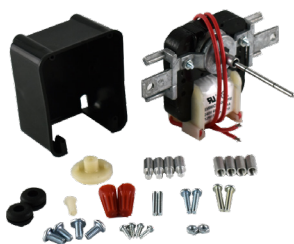
UTILITY MOTOR
120V, .55 Amp, 3000 RPM, CW/CCW. Reversible direction. Fits Bohn, Heatcraft and more.

MOTOR

MADE IN CHINA

UNIVERSAL

HVAC

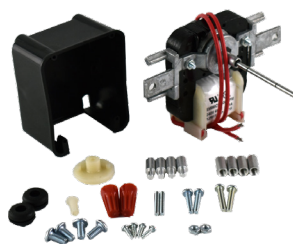


EM998CM

UNIVERSAL MOTOR - 240V
240V, 0.12A, 3000 RPM
Universal evaporator fan motor.

MOTOR

MADE IN CHINA



EM999CM

UNIVERSAL MOTOR - 120V
120V, 0.26A, 3000 RPM
Universal evaporator fan motor.

MOTOR

MADE IN CHINA

GE

PTAK



WP12X10002CM











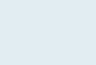
KNOB
1 1/2" diameter, white.
Fits GE Ptak units.

KNOB

MADE IN CHINA

UNIVERSAL

MOTORS

PART NUMBER	AMPS	VOLTS	RPM	SHAFT	ROTATION	DETAILS
 EM550CM	0.40	120V	3000	n/a	CCW	4 1/2" blower wheel, 9" lead w/120V plug
 EM551CM	0.40/0.75	120V	1550/3000	n/a	CW	Two speed motor, 9" lead w/ 120V plug
 EM552CM	0.65	120V	3000	n/a	CCW	9" lead w/ 120V plug
 EM553CM	0.50	120V	3000	n/a	CCW	9" lead w/ eyelet
 EM554CM	0.50/0.70	120V	1550/3000	n/a	CCW	9" lead w/ 3 pin
 EM555CM	0.65	120V	3000	n/a	CCW	9" lead w/ 120V plug
 EM670CM	0.32	120V	3000	3/16 x 1 1/4	CW/CCW	4 1/2" & 5 1/2" Fan Blades
 EM672CM	0.32	240V	3000	3/16 x 1 1/4	CW/CCW	4 1/2" & 5 1/2" Fan Blades
 EM673CM	0.34/0.55	120V	3000/1550	3/16 x 1 1/4	CW/CCW	4 1/2" & 5 1/2" Fan Blades
 EM675CM	0.5/1.0	120/240V	3000	3/16 x 2 3/8	CW/CCW	5 1/2" Fan Blades
 EM690CCM	0.32	120V	3000	3/16 x 1 1/4	CW/CCW	4 1/2" & 5 1/2" Fan Blades

CHOICE

MANUFACTURED PARTS

 Email

info@choicemfg.parts
www.choicemfg.parts

 Phone

P : (331) 702-2051
F : (630) 857-9260

 Address

2012 Corporate Lane
Suite 124
Naperville, IL 60563

HVAC Collection

All content contained in this document is the property of Choice Manufactured Parts. No part of this document may be duplicated or reproduced without written permission from Choice Manufactured Parts.

Part numbers and illustrations are for identification purposes only. Items offered for sale are not represented to be manufactured by the company that built the original equipment.